



IMPROPER INSTALLATION OR ATTACHMENT OF EQUIPMENT OR ACCESSORIES COULD RESULT IN ELECTRIC SHOCK, SHORT-CIRCUIT, LEAKS, FIRE OR OTHER DAMAGE TO THE EQUIPMENT. BE SURE ONLY TO USE ACCESSORIES MADE BY DAIKIN WHICH ARE SPECIFICALLY DESIGNED FOR USE WITH THE EQUIPMENT AND HAVE THEM INSTALLED BY A PROFESSIONAL. IF UNSURE OF INSTALLATION PROCEDURES OR USE, ALWAYS CONTACT YOUR DAIKIN DEALER FOR ADVICE AND INFORMATION.

THIS KIT INCLUDES THE FOLLOWING PARTS

model	liquid branch	discharge gas branch	suction gas branch	heat insulation material	reducer/expander pipe
KHRQM22M20T8	o	—	o	2 sets	4 pipes
KHRQM22M29T8	o	—	o	2 sets	5 pipes
KHRQM22M64T8	o	—	o	2 sets	6 pipes
KHRQM22M75T8	o	—	o	2 sets	7 pipes
KHRQM23M20TA KHRQM23M20T8	o	o	o	3 sets	TA: 3 pipes T8: 2 pipes
KHRQM23M29TA KHRQM23M29T8	o	o	o	3 sets	5 pipes
KHRQM23M64TA KHRQM23M64T8	o	o	o	3 sets	8 pipes
KHRQM23M75TA KHRQM23M75T8	o	o	o	3 sets	TA: 17 pipes T8: 13 pipes

DIMENSIONS OF THE PIPING

Branch dimensions

	liquid branch	discharge gas branch	suction gas branch
KHRQM22M20T8		—	 reducer or expander pipe 1, 2x 2, 4
KHRQM22M29T8	 reducer or expander pipe 12	—	 reducer or expander pipe 5, 7, 2x 8
KHRQM22M64T8	 reducer or expander pipe 2x 5	—	 reducer or expander pipe 6, 7, 8, 9
KHRQM22M75T8	 reducer or expander pipe 3	—	 reducer or expander pipe 4, 6, 9, 2x 10, 11

	liquid branch	discharge gas branch	suction gas branch
KHRQM23M20TA KHRQM23M20T8			
KHRQM23M29TA KHRQM23M29T8			
KHRQM23M64TA KHRQM23M64T8			
KHRQM23M75TA KHRQM23M75T8			

TA: reducer or expander pipe 2, 4, 13
T8: reducer or expander pipe 2, 4

reducer or expander pipe 12

reducer or expander pipe 5, 7, 2x 8

reducer or expander pipe 2x 5

reducer or expander pipe 5, 7, 2x 8

reducer or expander pipe 6, 9

TA: reducer or expander pipe 3, 15
T8: reducer or expander pipe 3

TA: reducer or expander pipe 2, 6, 7, 8, 9, 10, 14
T8: reducer or expander pipe 2, 6, 7, 8, 9, 10

TA: reducer or expander pipe 4, 6, 9, 2x 10, 11, 14, 16
T8: reducer or expander pipe 4, 6, 9, 2x 10, 11

Reducer/expander pipe dimensions

1 	2 	3 	4
5 	6 	7 	8
9 	10 	11 	12
13 	14 	15 	
16 			

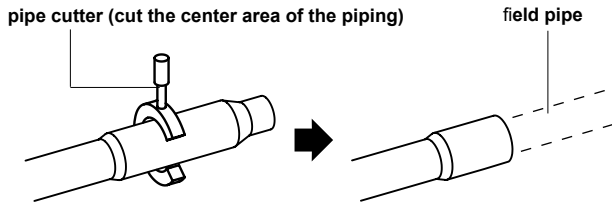
INSTALLATION PROCEDURE



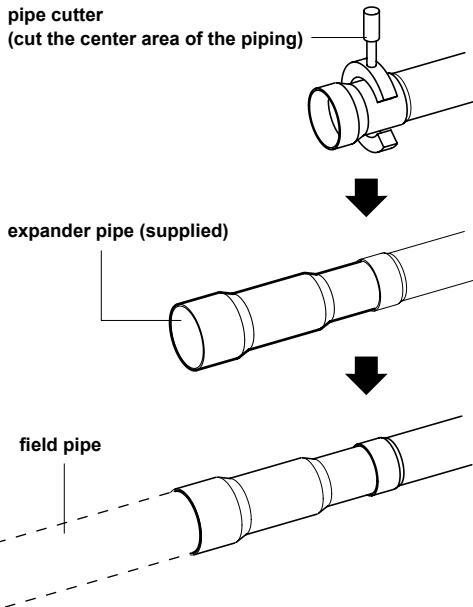
INSTALLATION PRECAUTIONS

Make sure to flow nitrogen gas through the pipe when brazing.

Use a pipe cutter to cut off the pipe at a position where the size of the pipe fits the size of the connecting pipe selected according to the pipe selection procedure.



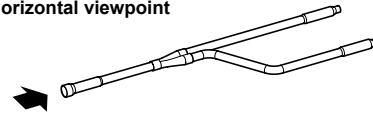
Use the supplied reducer/expander pipes when necessary



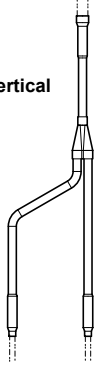
Installation orientation

Install the branches so that they are oriented vertically or horizontally.

horizontal viewpoint



or vertical



Within 30°



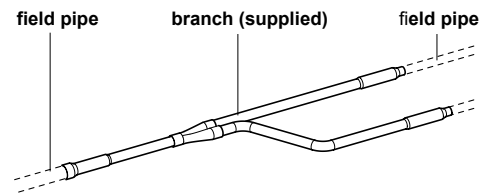
(horizontal line)

horizontal

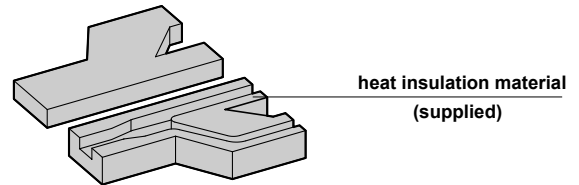
Heat insulation

Be sure to insulate the branches against heat.

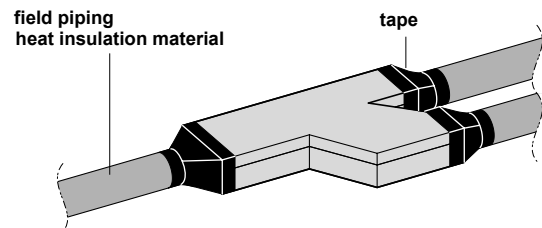
■ Example of connected branch.

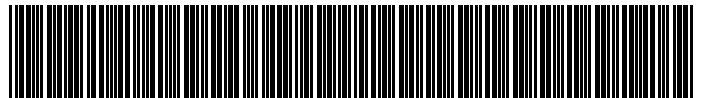


■ Use the supplied heat insulation material to insulate the branches against heat.



■ Apply the heat insulation material and seal all connections with tape.





4PW36003-1 B 0000000F